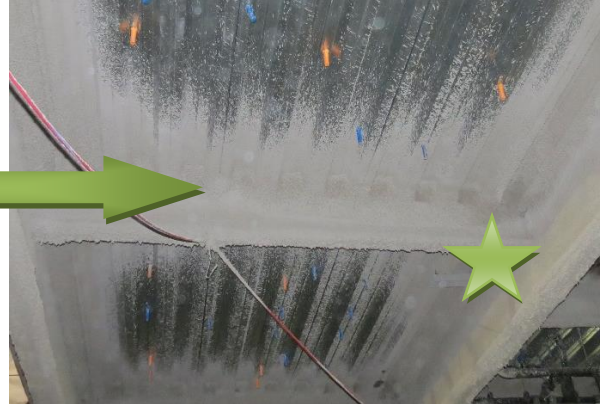




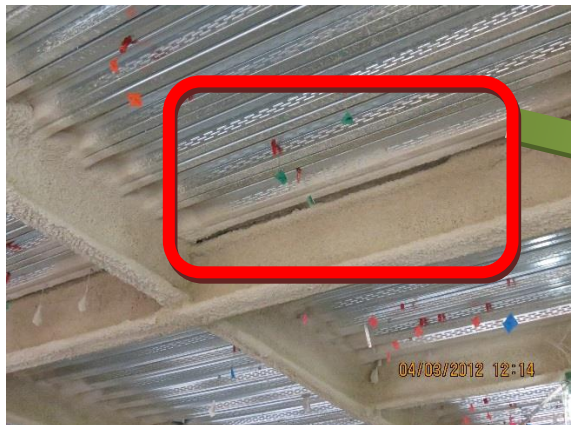
**According to UL and the NFCA (National Fireproofing Contractors Association):
The flutes above the beam flange being sprayed is required to be full with spray fireproofing...**



The flutes perpendicular to the top flange of the beam is required to be fully packed with spray fireproofing to the edge of the beam flange or other approved methods per NFCA Bulletin 1003.



The floor should be covered with plastic in order to protect the floor from extra moisture from the spray fireproofing, which could create concerns with the floor finish.



The flutes parallel to the top flange of the beam is required to be fully packed with spray fireproofing to the edge of the beam flange or other approved methods per NFCA Bulletin 1003.

Please contact Corey if you would like a copy of the NFCA Bulletin 1003